

RIDEREVER MCX-2 Flat Mount

REVER MCX-2 FLAT MOUNT MECHANICAL BRAKE INSTRUCTIONS

REVER MCX-2 FLAT MOUNT MECHANICAL BRAKE INSTRUCTIONS

Thank you for choosing the Rever MCX-2 Flat Mount brake system. To ensure the best performance and reliability, please follow the instructions provided. If you have any questions, please contact an authorized dealer or Rever representative. Enjoy and ride safely.

WARNING: CYCLING CAN BE DANGEROUS. BICYCLE PRODUCTS SHOULD BE INSTALLED AND SERVICED BY A PROFESSIONAL MECHANIC. NEVER MODIFY YOUR BICYCLE OR ACCESSORIES. READ AND FOLLOW ALL PRODUCT INSTRUCTIONS AND WARNINGS INCLUDING INFORMATION ON THE MANUFACTURER'S WEBSITE. INSPECT YOUR BICYCLE BEFORE EVERY RIDE. ALWAYS WEAR A HELMET.

Additional Product and Safety Information can be found at — www.riderever.com/safety

INTENDED USE

ASTM Condition 2: Smooth pavement to smooth gravel roads and groomed trails with low-angle grades and drop offs of less than 6" (15cm).

COMPATIBILITY

Brake Levers: The MCX-2 Flat Mount caliper is compatible with any short-pull, dropbar lever designed for cyclocross and road riding.

Frame and Fork: This MCX-2 caliper features a 34mm Flat Mount. It will work with most Flat Mount forks with 160mm rotors and Flat Mount frames with either 140mm or 160mm rotors.

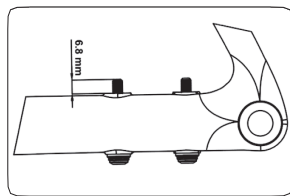
INCLUDED HARDWARE

Qty	Description
1	Caliper
1	Indexed inline brake adjuster
1	Heat dissipation cover
1	Heat dissipation brake pad
2	Adapter Screw
2	Caliper mounting bolt

Fork Configuration	Rotor Size	Adapter Needed
70mm Flat Mount	160mm	Front Flat Mount adapter, 160mm position
70mm Flat Mount	140mm	140mm front rotor not recommended
Frame Configuration		
34mm Flat Mount	160mm	Rear 160mm Flat Mount adapter
34mm Flat Mount	140mm	None—direct fit

TOOLS NEEDED

- 5mm hex wrench | 5-mm-Inbusschlüssel | Clé hexagonale de 5 mm | Llave hexagonal de 5 mm
- 2mm hex wrench | 2-mm-Inbusschlüssel | Clé hexagonale de 2 mm | Llave hexagonal de 2 mm
- T25 Torx wrench | Torx-Schlüssel T25 | Clé Torx T25 | Llave Torx T25
- Cable and housing cutter | Kabel- und Zughüllenschneider | Ciseaux pour câble et gaine | Cúter de funda y cable
- Cable tip crimper | Kabelcrimpzange | Sertisseuse d'embout de câble | Plegador de puntas de cable
- Awl | Ahle | Poinçon | Punzón
- Torque wrench | Drehmomentschlüssel | Clé dynamométrique | Llave dinamométrica

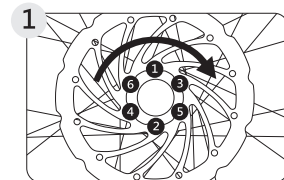


Usage Location	Tool
Caliper fixing bolt	T25 Torx wrench
Adapter fixing bolt	T25 Torx wrench
Rotor mounting bolt	T25 Torx wrench
Cable fixing bolt	5mm hex wrench
Pad retention axle	3mm hex wrench
Return spring adjustment	2mm hex wrench
Pad adjustment	2mm hex wrench

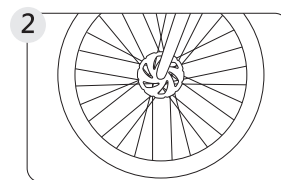
Frame Mount Thickness	Bolt Length
10 mm	16.8 mm
15 mm	21.8 mm
20 mm	26.8 mm
25 mm	31.8 mm
30 mm	36.8 mm
35 mm	41.8 mm

REVER MCX-2 FLAT MOUNT MECHANICAL BRAKE INSTRUCTIONS

INSTALLATION: ROTOR

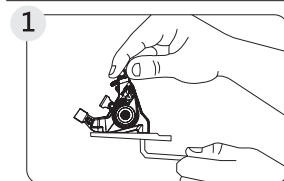


Using gloves, place the rotor onto 6-bolt hub. While applying a clockwise rotation to the rotor, tighten the bolts ¼ turn at a time following the pattern shown. Continue until the bolts are tightened to 6Nm.

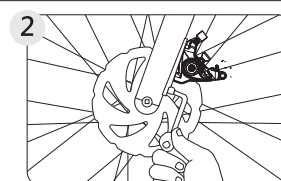


Install the wheel into the frame or fork per the manufacturer's instructions.

INSTALLATION: CALIPER

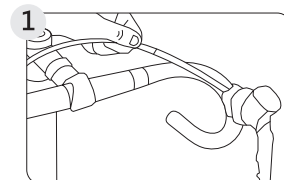


Consult the table to determine if you need an adapter for your frame or fork. If using an adapter, first install it to caliper and torque fixing bolts to 6-8Nm.

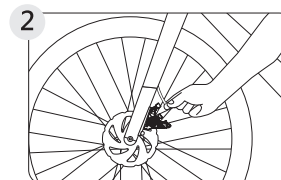


Then loosely install the caliper or adapter onto the frame or fork. When installing the rear caliper, view the table to find the correct length mounting bolts. The bolts should extend 6.8mm from the frame.

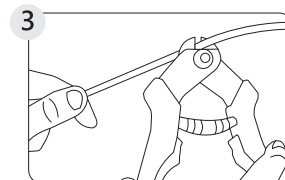
INSTALLATION: CABLE AND HOUSING



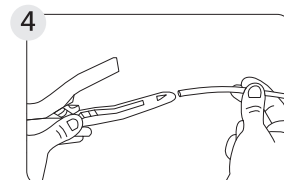
Install EZ-Bend housing into brake lever body, ensuring housing is seated fully.



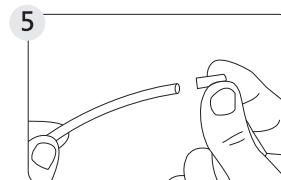
Measure the length of housing needed. Ensure housing makes smooth bends between cable stops and that handlebars can rotate completely in both directions without pulling housing taut.



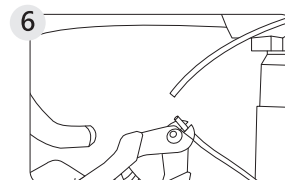
Using a sharp housing cutter cut housing to length.



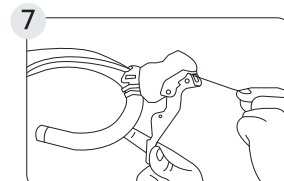
Using an awl, open the cut end of the housing liner. Ensure there are no burrs that can contact the inner wire.



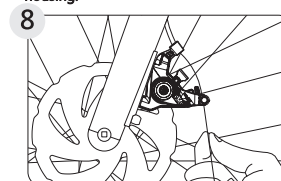
Install hooded end cap at end of housing where it meets the caliper. If there are sections of open cable, install lined end caps at those ends of cut housing.



If using the included inline adjuster, cut out a 20mm section of housing. Open cut ends of housing with the awl and insert into inline adjuster. No housing end caps are needed.



Feed cable through brake levers and housing.

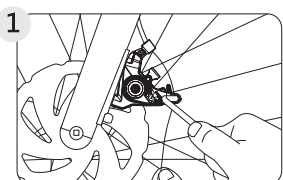


Feed cable through adjusting barrel and cable fixing plate on the caliper. Do not cut cable until caliper installation and adjustment are complete.

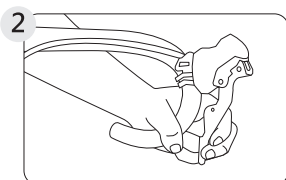
RIDEREVER MCX-2 Flat Mount

REVER MCX-2 FLAT MOUNT MECHANICAL BRAKE INSTRUCTIONS

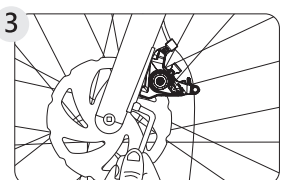
INSTALLATION: FINAL ADJUSTMENTS



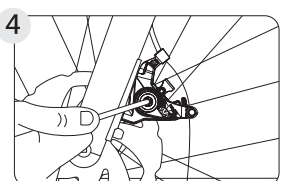
Pull cable taut and tighten anchor bolt.



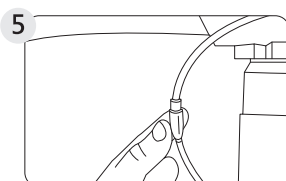
Pull brake lever until it cannot be pulled further and hold.



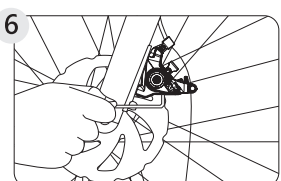
Alternating from one bolt to the other in quarter turns, tighten caliper mounting bolts to 6-8Nm. Release brake lever.



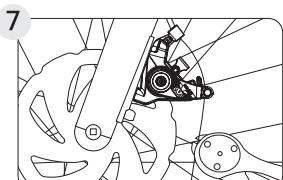
Using a 2mm hex wrench, adjust the outboard and inboard pistons until rotor is centered between brake pads.



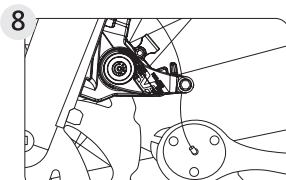
Using the inline adjuster, adjust the cable tension to desired feel.



If desired, use a 2mm hex wrench to adjust return spring tension to alter the lever feel.



Once you have reached the desired lever and caliper feel and braking power, cut the cable at the caliper. **WARNING** – Do not leave enough cable that it can contact the rotor. If the free end of the cable becomes tangled in the rotor while riding, it could lead to serious injury.



Install and crimp cable tip.

DISC BRAKE PAD AND ROTOR BED-IN PROCEDURE

New brake pads and rotors should be put through a wear-in process called "bed-in". The bed-in procedure, which should be performed prior to your first ride, ensures the most consistent and powerful braking feel along with the quietest braking in most riding conditions. The bed-in process heats up the brake pads and rotors which deposits an even layer of brake pad material (transfer layer) to the braking surface of the rotor. It is this transfer layer that optimizes braking performance.

The bed-in process requires you to perform heavy braking. You must be familiar with the power and operation of disc brakes. Braking heavily when not familiar with the power and operation of disc brakes could cause you to lose control of your bicycle, which could lead to a crash and could result in serious injury. If you are unfamiliar with the power and operation of disc brakes, you should have the bed-in process performed by a qualified bicycle mechanic.

Step 1: Accelerate the bike to a moderate speed, then firmly apply the brakes until you are at walking speed. Repeat twenty times.

Step 2: Accelerate the bike to a faster speed. Then very firmly apply the brakes until you are at walking speed. Repeat ten times.

REVER MCX-2 FLAT MOUNT MECHANICAL BRAKE INSTRUCTIONS

MAINTENANCE

ONGOING MAINTENANCE

If you lack proper tools, knowledge, or patience to get the job done right, visit your friendly, professional mechanic for assistance. In the event you lose or break part of your Rever brake caliper, spare parts are available through your local bike shop, or contact Rever directly at info@riderever.com.

DISC BRAKE PADS MAINTENANCE

- Do not get oil or grease on the rotor or disc brake pads. This could cause the brakes to perform poorly or not at all.
- If while riding, your brake(s) makes noise, it could be caused by pads that are worn past the safe, usable limit. Before checking the pads' thickness, make sure the system has cooled down to prevent injury. Check that the thickness of each friction material is 1.2 mm or more, not including the thickness of the backing plate.
- The Rever MCX-2 Flat Mount caliper is compatible with the Shimano® G-Type disc brake pad shape. Note that the MCX-2 is not compatible with pads that include cooling fins or features that change the backing plate design.

GENERAL MAINTENANCE

- Always make sure the front and rear brake are working correctly before you ride. Squeeze brake levers and attempt to move bike to ensure cables and brake pads move freely. Check to make sure cables are not frayed and check housing for cracks and corrosion.

- The required braking distance will be longer during wet weather. Reduce your speed and apply brakes early and gently.

- For best performance, make sure the caliper, rotor, and disc brake pads are free of dirt, mud, ice, or any other contaminants.

LIMITED WARRANTY

This warranty does NOT cover the following:

- Damage due to improper assembly or follow-up maintenance or lack of skill, competence or experience of the user or assembler
- Products that have been modified, neglected, used in competition or for commercial purposes, misused or abused, involved in accidents or anything other than normal use
- Installation of components, parts or accessories not originally intended for or compatible with the Rever product
- Normal wear and tear
- Labor required to remove and/or refit and re-adjust the product within the bicycle assembly

This limited warranty is expressly limited to the repair or replacement of a defective product, at the option of Rever, and is the sole remedy of the warranty. This limited warranty applies only to the original purchaser of the Rever product and is not transferable. This warranty applies only to products purchased through an authorized dealer or distributor. In no event shall Rever be liable for any loss, inconvenience or damage, whether direct, incidental, consequential, or otherwise resulting from breach of any express or implied warranty or condition, of merchantability, fitness for a particular purpose, or otherwise with respect to our products except as set forth herein.

This limited warranty gives the consumer specific legal rights, and those rights and other rights may vary from place to place. This limited warranty does not affect your statutory rights.

TO THE EXTENT NOT PROHIBITED BY LAW, THESE WARRANTIES ARE EXCLUSIVE AND THERE ARE NO OTHER EXPRESS OR IMPLIED WARRANTIES OR CONDITIONS INCLUDING WARRANTIES OR CONDITIONS OF MERCHANTABILITY AND FITNESS FOR A PARTICULAR PURPOSE.

RIDEREVER MCX-2 Flat Mount

REVER MCX-2 FLAT MOUNT MECHANICAL BRAKE INSTRUCTIONS

REVER MCX-2 Flat MOUNT 機械式碟煞安裝說明書

感謝您選購 Rever MCX-2 機械式碟煞系統產品。為了確保產品的最佳性能及可靠性，安裝及使用請依照本使用說明書。有關於本產品的任何疑問，請聯絡授權經銷商或Rever業務代表。祝騎行愉快、平安。

! 騎乘自行車具有一定程度的危險性。自行車產品必須由專業技師進行安裝及保養，請勿自行改裝自行車或其零組件。產品使用請詳閱並遵照產品說明書或透過製造商官方網站取得相關資訊。騎行前請定期檢查自行車制動系統，並確實戴好安全帽之後再上路。

其他相關產品及安全資訊，請上官方網站查詢 — ride-rever.com/safety

使用路面

! ASTM 2: 一般平滑路面到平鋪碎石路面/林道，具有小坡度，落差不超過 6" (15 cm)。

相容性

剎車把手：MCX-2 Flat Mount 卡鉗可使用於公路車及越野公路車之平把/彎把用剎車系統。

前叉與車架後下叉：MCX-2卡鉗可安裝於Flat Mount系統(34 mm)，能搭配大部分車架型體與前叉規格，可對應140mm或160mm碟盤，但可能需搭配適合的轉接座。

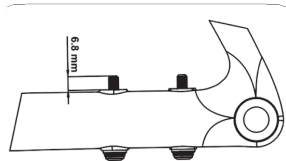
包裝盒內包含以下配件

- 數量 品名
- 1 卡鉗
- 1 定格調整螺絲
- 1 散熱罩
- 2 散熱罩來令片
- 2 卡鉗固定轉接座螺絲
- 2 卡鉗固定車架螺絲

車架後下叉厚度	螺絲長度
10mm	16.8mm
15mm	21.8mm
20mm	26.8mm
25mm	31.8mm
30mm	36.8mm
35mm	41.8mm

需要工具

- 5mm六角板手
- 2mm六角板手
- T25星狀板手
- 線管及內線剪刀
- 線尾帽夾
- 錐子
- 扭力板手

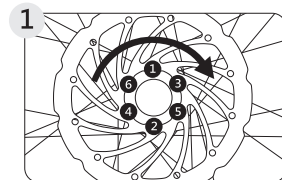


前叉之型式	碟盤尺寸	轉接座	使用位置	工具
70mm Flat Mount	160mm	前Flat Mount 轉接座，160mm	碟盤固定螺絲	T25星狀板手
70mm Flat Mount	140mm	前叉不建議安裝140mm 碟盤	卡鉗螺絲	5mm六角板手
			轉接座固定螺絲	5mm六角板手
			線管固定螺絲	5mm六角板手
			來令片固定螺絲	3mm六角板手
			卡鉗拉簧彈力調整	2mm六角板手
			來令片間隙調整	2mm六角板手

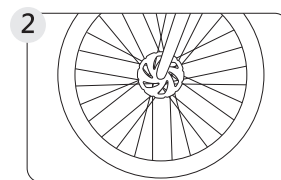
車架後下叉之型式	碟盤尺寸	轉接座
34mm Flat Mount	140mm	無須轉接座，直接安裝
34mm Flat Mount	160mm	後下叉160mm轉接座

REVER MCX-2 FLAT MOUNT MECHANICAL BRAKE INSTRUCTIONS

安裝碟盤

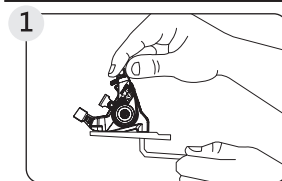


1 安裝前，請先配戴手套，以確保安全。首先，以順時針方向轉動將碟盤置入6孔座上，接著依照圖示順序鎖固碟盤螺絲，以每次旋入1/4圈的方式旋緊，直到螺絲鎖固扭力值達 6 Nm。

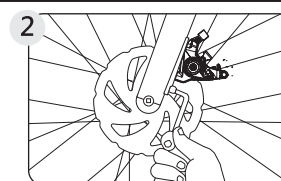


2 安裝輪組至車架或前叉時，請依照輪組說明書進行安裝。

安裝卡鉗

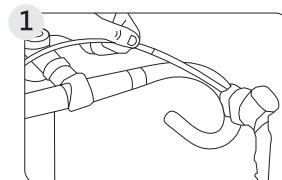


1 請依照上表確認您的車架或前叉是否需要安裝轉接座。使用ReverFlat mount轉接座，請將螺絲鎖固之扭力值設定至 6-8 Nm。如使用其他品牌之轉接座，則螺絲鎖固扭力設定請依照該製造商之規範。

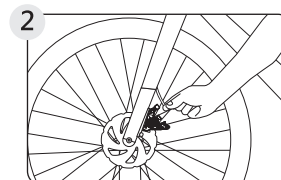


2 在線管安裝前，僅將卡鉗稍為固定在車架(不旋緊螺絲)，前叉或轉接座上。

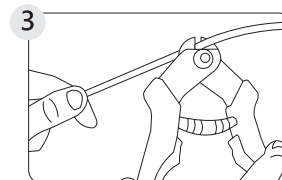
安裝內線與線管



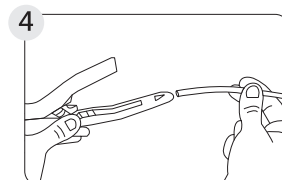
1 將EZ線管安裝在剎車把手本體，同時確保線管能夠完全銜接。



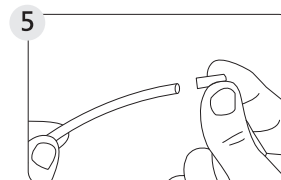
2 量測所需線管長度，確認線管能夠於止栓間走線順暢，把手轉動自如。



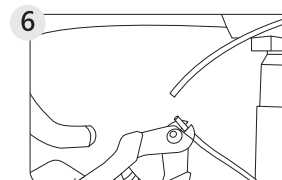
3 使用線管及內線剪刀，並裁切適當長度。



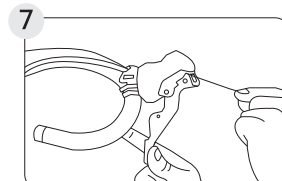
4 使用錐子，適度修整及擴孔線管之內管，確保無毛邊接觸到內線。



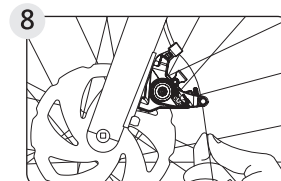
5 在接續卡鉗之線管端安裝防汙泥端套，另於其它開放的線管端安裝尾端蓋以利內線之走線。



6 安裝內附定格調整螺絲時，可直接安裝於頭管前之線管，以便於日後調整。安裝定格調整螺絲時，無須外加端套。



7 自剎車把手端將內線緩緩穿過線管。

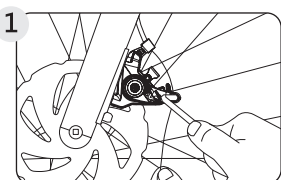


8 將內線穿過調整螺絲與卡鉗之壓線板，卡鉗安裝與調整完成前，請勿剪斷內線。

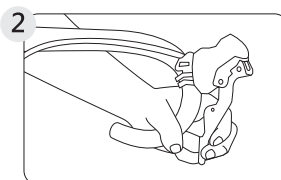
RIDEREVER MCX-2 Flat Mount

REVER MCX-2 FLAT MOUNT MECHANICAL BRAKE INSTRUCTIONS

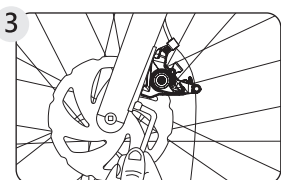
最終調教



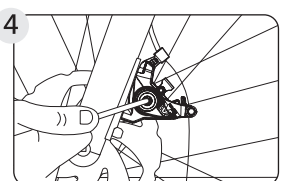
1 將線管拉緊並且鎖緊固定螺絲。



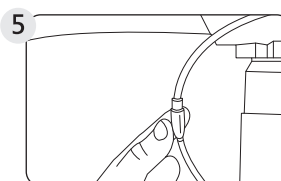
2 按壓剎車手把到底。



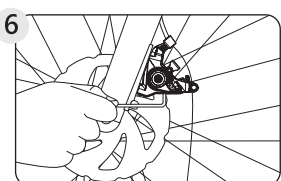
3 將卡鉗固定螺絲前後輪替旋緊，每次以約1/4轉進行鎖固，直到螺絲扭力值達到 6-8Nm，再將剎車手把放開。



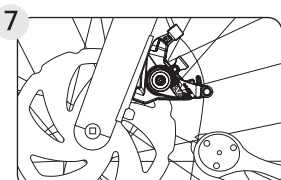
4 使用2mm六角板手，調整卡鉗兩側活塞位置，直到碟盤平均置於兩側來令片中間。



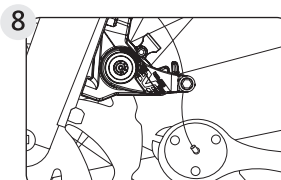
5 使用卡鉗上的定格調整螺絲調整剎車輕緊度。



6 如有需要，可使用2mm六角螺絲調整卡鉗拉簧彈力適度調整剎車手感。



7 當調節到所需之剎車手感與制動力，即可適度鬆開卡鉗之內線。警告：內線請勿預留過長，以免與卡鉗直接接觸。過長之內線如發生捲入作動中的碟盤時，將會導致嚴重傷害。



8 內線尾端壓入線尾帽夾。

來令片與碟盤之磨合步驟

全新來令片與碟盤初期需要一段磨合時間，稱之為磨合期。磨合程序應該在第一次騎乘前進行，以確保在任何騎乘環境都保有安全、寧靜與持續性的剎車力道及手感。藉由來令片與碟盤的充分磨合，能讓來令片完整並緊密壓合於碟盤表面，使剎車效能達到最佳化。

磨合需要較重的剎車力道執行，因此您必須熟悉碟煞系統並小心操作。若在不熟悉的情況下過度按壓剎車把手，可能會失去對自行車的控制而造成翻覆，引發嚴重傷害。因此，建議由專業合格技師協助進行來令片磨合。

步驟1：將自行車加速到一般速度，然後將剎車把手按壓到底，直到車速降回到如人行走的速度，並反覆執行20次。
步驟2：將自行車加速至稍快速度，然後將剎車把手按壓到底，直到車速降回到如人行走的速度，並反覆執行10次。

REVER MCX-2 FLAT MOUNT MECHANICAL BRAKE INSTRUCTIONS

日常性保養

假使您缺少適當的工具、技術或經驗進行正確保養工作，請尋求專業技師協助，若您遺失或損壞部分Rever卡鉗零件，請聯繫販售Rever產品的車店，或直接發信到如下電郵地址：info@riderever.com。

來令片保養

- 請避免任何油漬沾到碟盤或來令片表面，否則將導致制動力降低、噪音產生，甚至剎車失效。
- 騎乘時，如剎車制動力的操作期間出現異音，來令片可能被磨損至使用極限。檢查或更換前，請確保剎車系統的溫度已降至室溫條件，以免燙傷。檢查兩側來令片的摩擦材厚度是否在1.2 mm以上，當厚度低於1.2 mm時請更換來令片。
- Rever MCX-2 Flat Mount 卡鉗可以搭配Shimano G-Type 來令片使用，請注意MCX-2與散熱來令片或背板設計變更後的來令片並不相容。

一般性保養

- 經常性確認前後剎車運作正常。按壓剎車把手並且移動自行車來確認內線與來令片正常作動及回彈是否順暢。檢視並且確認內線沒有損傷，線管無裂痕與生鏽。
- 雨天時，會需要更長的剎車距離，請降低速度，並及早且溫和地使用剎車。
- 為使剎車保有最佳效能，請確保卡鉗、碟盤及來令片之清潔，應盡量避免沾附泥土、冰雪或任何其他污染物質。

保固限制說明

本產品自購買日起提供2年保固，但僅限於材料及組裝瑕疵之保固。基於以下之限制條款，請留存購買時之憑證。

本保固不包含以下條件：

- 不當組裝或維修。
- 使用者或安裝者欠缺相關技術、能力或經驗所造成產品的損傷或損壞。
- 不符合原廠規定之改裝、疏忽，或使用於競賽或商業目的，或因誤用、濫用及交通事故，或是任何非正常使用之情形而產生的損壞。
- 安裝非Rever原廠零組件或配件，或使用不兼容於Rever之零組件或配件而造成的損壞。

產品塗裝、表面處理、外觀工藝的損傷或劣化。

- 正常的耗損。
- 組裝自行車時，在執行拆卸、重新安裝或調適產品時人為的損壞。

本保固限制明確規範，針對Rever的瑕疵產品僅可進行產品維修或產品更換的補償做法。本保固責任僅保障於原始購買人且權益不得轉讓。本保固責任僅保障於Rever所授權之零售商或經銷商購買的消費者。除了本保固所規範的範圍外，在任何狀況下，Rever均無需對直接的、偶然的、間接的狀況所產生的損失、不便、損害承擔責任。本保固給予消費者具體的法律權利，該權利與其他權利可能會因不同國家或區域而有所不同。本保固將不影響您的法律權利。若無法律禁止，上述之聲明即為特有的保固範圍，別無其它如可售性擔保、適用性擔保及其他保固條款。